

MARASCO & ASSOCIATES, INC.
 HEALTHCARE ARCHITECTS
 AND CONSULTANTS
 1660 WYMKOP ST. SUITE 925
 DENVER, COLORADO 80202
 PH. (303) 832-2887
 PH. (303) 832-2887
 FAX (303) 861-0760

9550 W. HIGSON ROAD
 ROSENBLUM, IL. 60018
 PH. (847) 292-4300
 FAX (847) 292-4310

THIS IS A SCHEMATIC DRAWING. NOT A WORKING DRAWING. JOHN A. MARASCO ARCHITECTS, INC. IS NOT PROVIDING CONTRACT DOCUMENTS, DESIGN DEVELOPMENT AND/OR CONSTRUCTION DETAILS. ENGINEERING, REGULATOR APPROVAL, DESIGN DEVELOPMENT AND/OR CONSTRUCTION DOCUMENTS. IT IS THE LOCAL ARCHITECT'S RESPONSIBILITY TO OBTAIN ALL NECESSARY PERMITS AND OUTLINE CONTRACT DOCUMENTS BASED ON THESE SPECIFICATIONS. IT IS FURTHER UNDERSTOOD THAT THE ARCHITECT'S RESPONSIBILITIES SPECIFICALLY DEFINE OWNER/CONTRACTOR/ARCHITECT AREAS OF CONTRACTUAL AGREEMENT.

JOB TITLE
 PROPOSED AFFINITY HEALTHCARE
 BUFFALO GROVE, ILLINOIS

SHEET TITLE
 SCHEMATIC SITE PLAN

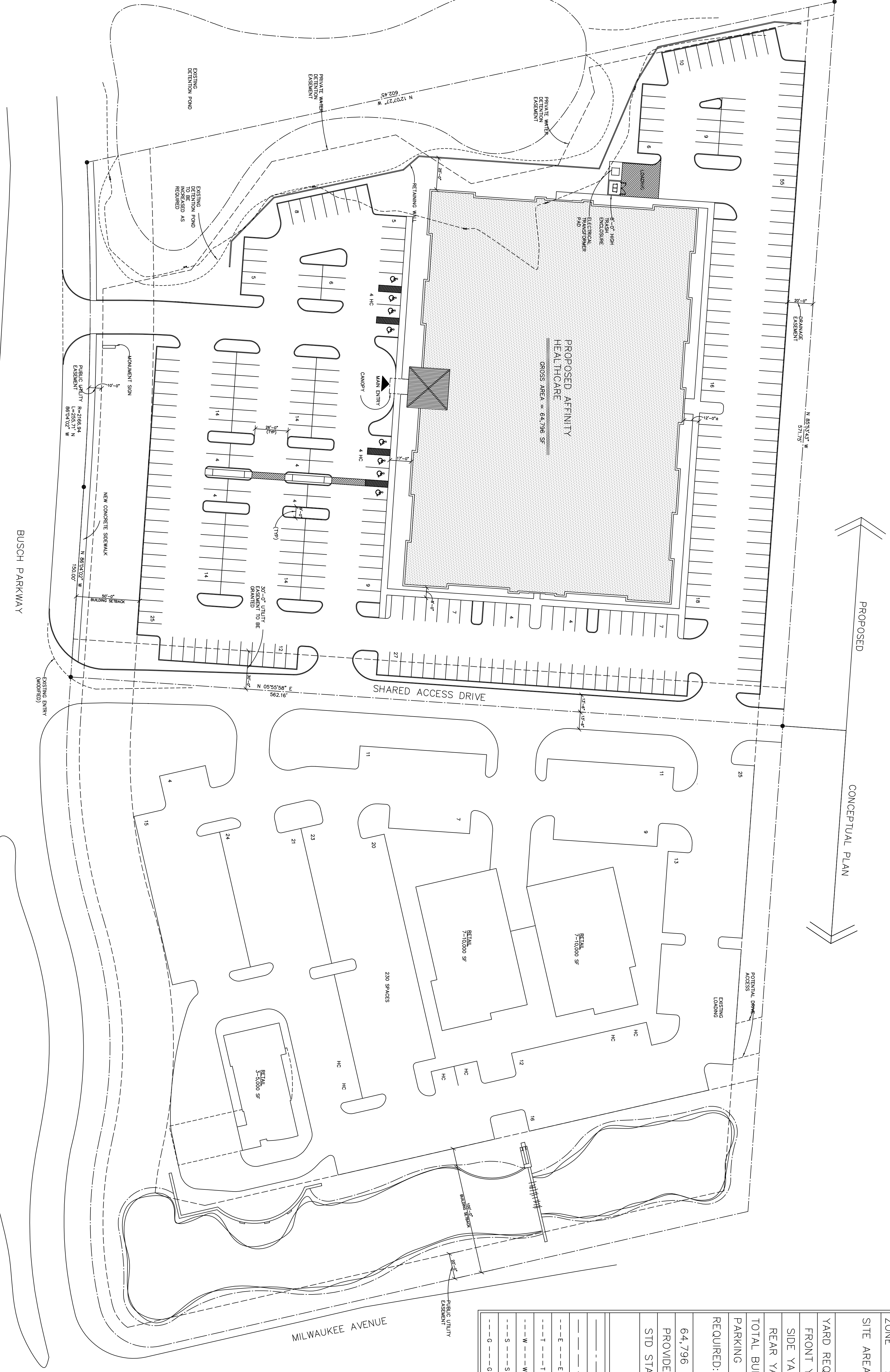
SHEET NUMBER
 S-1 1

drawn by JTW

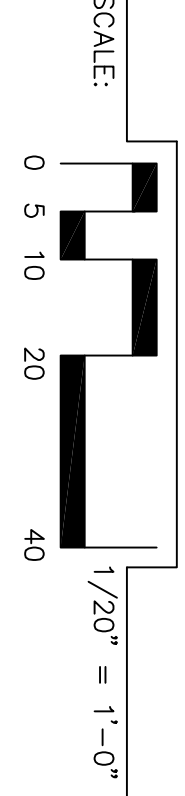
job no. PROSPECTIVE
 date 04/08/08
 revision

SITE INFORMATION	
ZONE :	INDUSTRIAL
SITE AREA	277,434 SF 6.37 ACRES
YARD REQUIREMENTS	
FRONT YARD	50'-0"
SIDE YARD	15'-0"
REAR YARD	20'-0"
TOTAL BUILDING AREA	64,796 SF
PARKING	
REQUIRED:	1 STALL PER 200 SF (GROSS) BUILDING AREA.
64,796 / 200	= 324 STALLS
PROVIDED	= 313 STALLS
STD STALL SIZE:	= 9 X 18.5'
LEGEND	
---	PROPERTY LINE
---	BUILDING SETBACK
---	UTILITIES/ELEC.
---	UTILITIES/TELEPHONE
---	UTILITIES/WATER
---	UTILITIES/SEWER
---	UTILITIES/GAS

NOTE: 8 PARKING STALLS HAVE BEEN ELIMINATED FROM MARASCO & ASSOCIATES SCHEMATIC SITE PLAN DATED 03/25/08



SCHEMATIC SITE PLAN



PRELIMINARY
 NOT FOR CONSTRUCTION

DRAWINGS, SPECIFICATIONS AND RELATED DOCUMENTS ARE THE PROPERTY OF MARASCO & ASSOCIATES, INC. AND ARE TO BE SOLELY USED AS INSTRUMENTS OF SERVICE WITH RESPECT TO THIS PROJECT. MARASCO & ASSOCIATES, INC. RETAINS ALL RIGHTS IN THIS PROJECT. ANY REUSE, REPRODUCTION, OR DISTRIBUTION OF ANY USE OR DUPLICATION OF DRAWINGS, SPECIFICATIONS OR RELATED DOCUMENTS IS STRICTLY PROHIBITED WITHOUT THE EXPRESS WRITTEN CONSENT OF MARASCO & ASSOCIATES, INC.

CONSTRUCTION DOCUMENTS, INCLUDING DRAWINGS AND SPECIFICATIONS, SHALL BE SUBMITTED TO MARASCO & ASSOC. FOR REVIEW AND REVIEW OF THE CONSTRUCTION DOCUMENTS TO ASSURE THAT DESIGN INTENT HAS BEEN MET.

THE MARASCO & ASSOCIATES LOGO, NAME, ADDRESS, AND PHONE NUMBER SHALL BE PUT ON ALL BLUE PRINTS AND WORKING DRAWINGS. THE ARCHITECT OF RECORD IS INDICATED MARASCO & ASSOCIATES, INC. AND SHALL BE VISIBLE AND LEGIBLE FROM A PASSING CAR IF THE SIGN IS A LETTER SIGN PARALLEL AND LEGIBLE AS YOU WALK BY IT IN AN INTERIOR SIGN.

